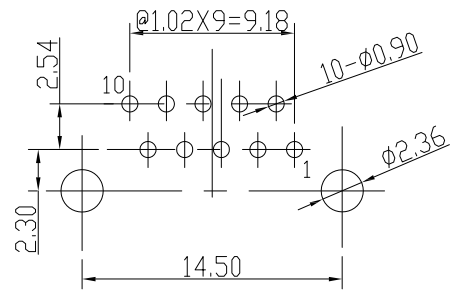
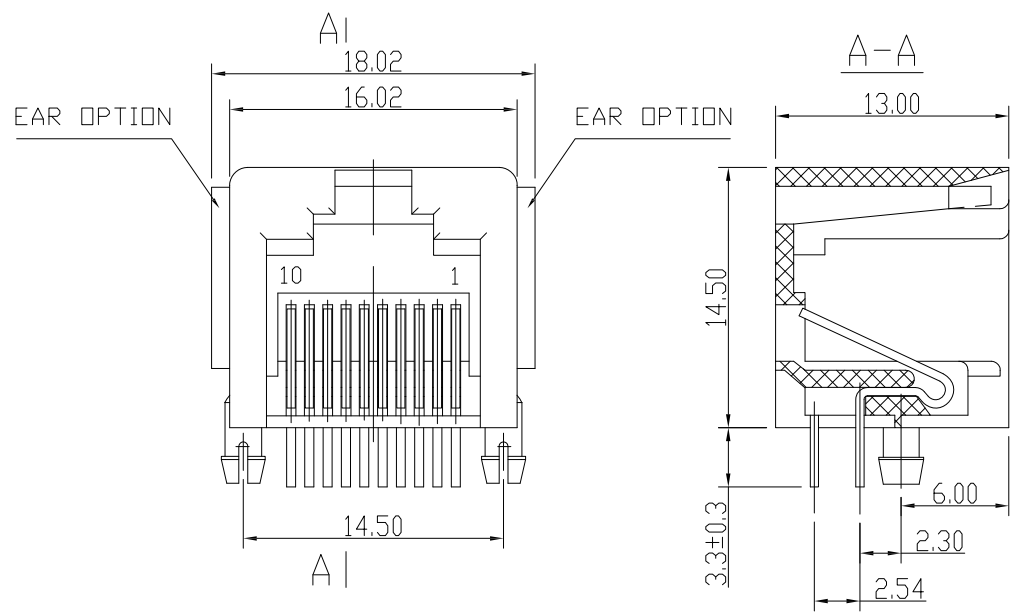
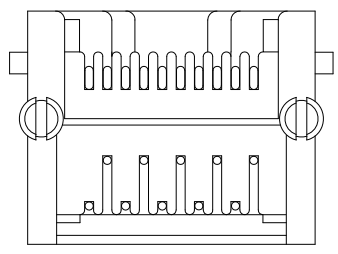


REV. 版本	ECN NO. 变更说明	DATE 日期
01	N/A	20.02.27



PC BOARD LAYOUT
THICKNESS=1.6MM

NOTES:

ELECTRICAL:

- VOLTAGE RATING : 125 VAC RMS.
- CURRENT RATING : 1.5 AMP.
- CONTACT RESISTANCE : 35 MILLIOHMS MAX.
- INSULATION RESISTANCE : 1000 MEGOHMS MIN @ 500 VDC.
- DIELECTRIC STRENGTH : 1000 VAC RMS 60Hz, 1MIN.

MECHANICAL:

- HOUSING&INSERT& MATERIAL : PBTUL94V-0.
- CONTACT MATERIAL : PHOSPHOR BRONZE ∅0.46mm.
- PLATING : GOLD PLATING OVER NICKEL.
- MATING/UNMATING FORCE : 22N / 2.27kg Max.
- RETENTION STRENGTH : 57.83N Min.
- OPERATING LIFE : 750 CYCLES MIN.

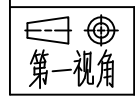
ENVIRONMENTAL:

- STORAGE : -10°C TO +40°C RELATIVE HUMIDITY<80%
- OPERATION: -40°C TO +85°C.

MATES WITH MODULAR PLUG CONFORMING TO
FCC PART 68, SUBPART F.

RoHS COMPLIANT

Coorle Technology



A4
SIZE

SCALE
比例
1:1

UNIT
单位
mm

CUSTOMER:
客户
MODEL NO:
料号
N/A

TOLERANCES
公差
00~15 ±0.15
15~30 ±0.20
30~ ±0.25
ANGLES: ±1°

Material:
材质
Finish:
电镀

SEE NOTE
SEE NOTE
SHEET 1 OF 1
第 1 页 共 1 页

Designed:
设计
Checked:
审核
Approved:
核准

Michael 20.02.27

NAME:
名称
DWG NO.
图号
PART NO.
料号

5521 PCB JACK 10P10C-E
CL3P0307
SEE TABLE

REV.
版本
06